

Signs and Symptoms of Cancer

Seek help from a medical professional immediately if you see or experience the following symptoms

811

Health Link
Advice 24/7

Call 811 for help finding a doctor

<https://albertafindadoctor.ca/>

Interpretation services might be available



PRESENCE
OF BLOOD



Cough



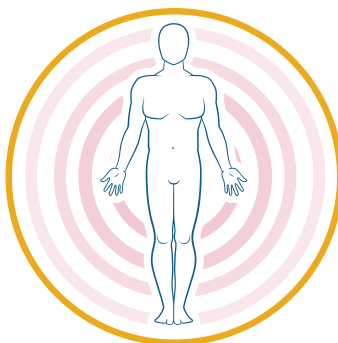
Pee



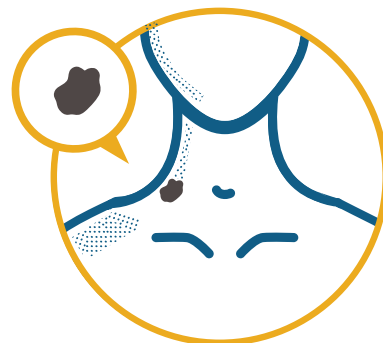
Poop



An unusual or
growing lump



Unexplained pain



Worrisome changes
to a mole



Unexplained significant
weight loss (10%)



Worsening cough



Feeling food gets
stuck in the chest

Signs and Symptoms of Cancer

Early detection of cancer is important to save lives. When found in early stages cancer is highly treatable. Cancer can cause many symptoms that may be similar to those caused by other diseases. However, there are some key symptoms that are more strongly linked to cancer especially if they are unexplained and persist or worsen over a period of a few weeks.



If you develop any of these symptoms, make an appointment to see your doctor right away. They will work with you to decide what tests you need.

Unusual lump or swelling:

(that may be painless and grows in size)

- ☐ breast lump, or a change in the size, shape, feel, or look of the breast
- ☐ skin sore or wound that doesn't heal
- ☐ skin mole that is new, or changes in size, shape, or color, or a mole that is crusty, bleeds, or oozes
- ☐ growing lump (lymph node) in neck, arm pit, or groin

Blood:

- ☐ coughing up blood
- ☐ blood in your pee (urine)
- ☐ blood in your poop (stool), especially if you also have trouble passing stool (constipation or not completely emptying), loose stool (diarrhea)
- ☐ Vaginal bleeding in post-menopausal women

Pain:

Especially if it is strong, persists or worsens, and has no cause/ unexplained

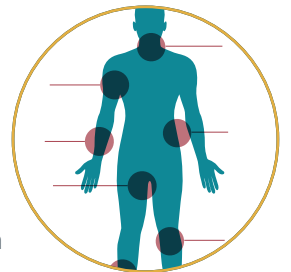
- ☐ worsening severe heartburn or chest pain
- ☐ pain in the belly that doesn't go away
- ☐ worsening pain at other sites e.g. mid-back, head

General Symptoms:

- ☐ unexplained and severe tiredness and lack of energy
- ☐ heavy night sweats that make your sheets and bed clothes wet
- ☐ feeling less hungry than usual and for longer periods
- ☐ unexplained weight loss over 10% of usual weight

Site-specific Symptoms:

- ☐ unexplained cough or shortness of breath that gets worse and doesn't go away (Lung)
- ☐ trouble swallowing food with feeling it sticks in the chest (food pipe)
- ☐ unexplained and worsening trouble peeing such as needing to pee right away, more often, with difficulty or pain
- ☐ weight loss, or pain in your belly
- ☐ unexplained increasing belly size in women without overall increasing body fat, especially with other symptoms, such as belly pain, frequent peeing or feeling more full after small meals.



Health Link
Advice 24/7

Call 811 for help finding a doctor
<https://albertafindadoctor.ca/>

Interpretation services might be available